

# AJ-718

V1.010P

## Auto Resetting Heat Detector with Wireless Interconnect

### Specifications

Detection Type	Electronic Thermistor Sensing
Fixed Temp. Trigger	57°C
Operating Temp. Range	0°C to 49°C
Humidity	0 to 95% RH, no condensation or icing
Power Source	Battery up to 10 year life
Buzzer Output	85db @ 3 meters
Wireless Frequency	433MHz
Interconnect Range	up to 50 meters apart
Dimensions	45mm x Ø116mm
Compatible with	AJ-765 Smoke Detector AJ-R106 Remote Test & Hush Controller

### Operation & Testing

Routine Testing of heat detectors should be done once a month.

To test the AJ-718 heat detectors press the test button for less than 1 second. The sounder should activate.

Any other linked detectors should also activate within 20 seconds.

The detectors sounder will automatically reset, when all the smoke has cleared.

**Hush feature.** When the heat detector has been activated, pressing the test button for less than 1 second will silence that smoke detectors sounder.

### Indication:

Green Flash every 60 seconds, Detector is performing correctly

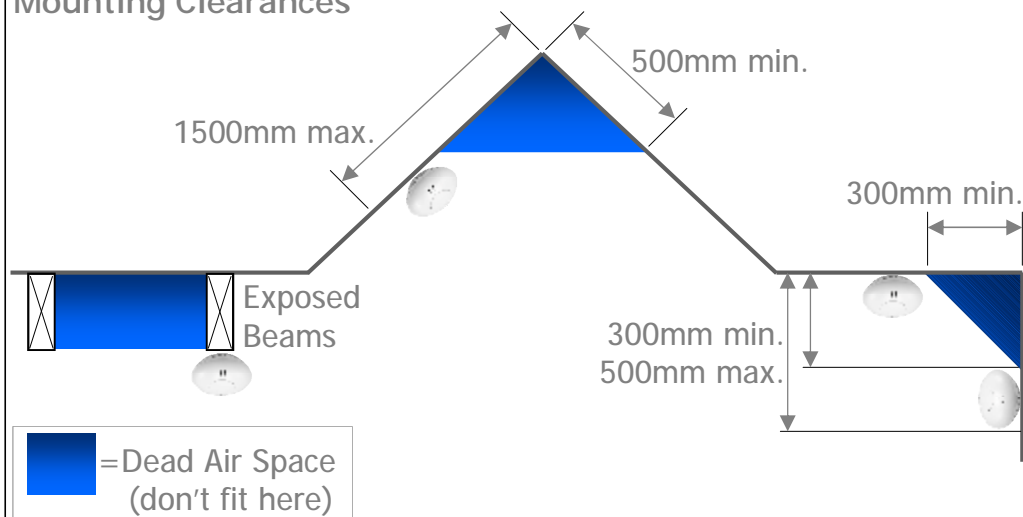
Red Flash every 8 seconds plus beep, Faulty, Clean/Replacement required




Red Flash every 50 seconds plus beep, Battery Low, Replacement required

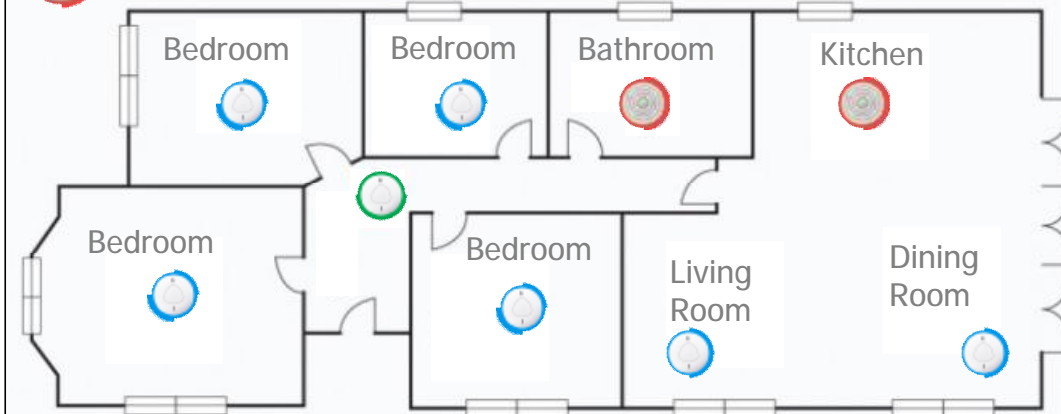
Red Flashing with No beeping, in Hush mode for 9 minutes

**\*\*Routine cleaning is required to ensure no false triggers.**

### Mounting Clearances



-  = Smoke Detector Must have Location (3m of every bedroom)
-  = Smoke Detector Recommended Locations
-  = Heat Detector Locations



\*Always refer to latest standards/building code for mounting locations

## Pairing AJ-718 Heat Detectors with Wireless Interconnect

### Step 1.

#### Power On

Remove the back and plug the battery lead into the matching socket.

*Note. AJ-718 heat detectors can also be paired with AJ-765 smoke detectors and AJ-R106 remote.*

### Step 2.

#### Clear Memory

Press & hold the test button until the Green light has flashed 4 times.

The Green light will then flash back 3 times slowly.

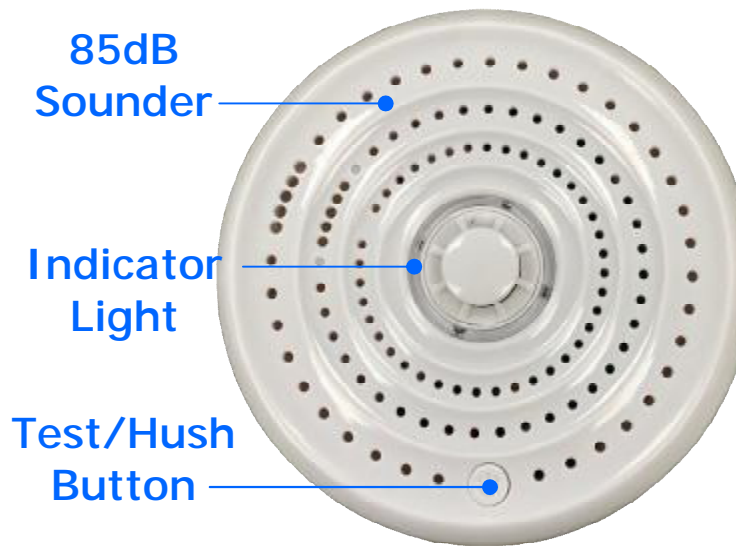
This must be done on all detectors before Pairing.

### Step 3.

#### Select a Master

Press & hold the test button of the detector to be the master, until the Green light has flashed 3 times.

The Red light will then start flashing to indicate its in Pairing mode. (60 seconds maximum)



ARROWHEAD ALARM PRODUCTS Ltd.  
344b Rosedale Rd,  
Albany, Auckland.  
Ph. 09 414 0085  
[www.aap.co.nz](http://www.aap.co.nz)  
v1.00



### Step 4.

#### Learn in a detector

Press & hold the test button of a slave detector, until the Green light has flashed 2 times.

The Red light will then start flashing as it tries to learn

The Green light will flash 3 times to indicate it has paired.

Repeat Step 4, on all other detectors until they have been paired.

### Step 5.

Wait 60 second before testing

### Step 6.

#### Testing

Press the test button (for less than 1 second) on one of the detectors.

Within 20 seconds all detectors paired together should also activate.

Note. The hush button can be pressed on each detector, without affecting the wireless interlink test.